



SELECTION GUIDE

DOOR STYLES + FINISHES + ACCESSORIES & MORE

[EvokeCabinetry.com](https://www.EvokeCabinetry.com)

EVOKE
CABINERY UNCOMPLICATED

TABLE OF CONTENTS

FINISH OPTIONS.....	3
Modern Classics (151)	4-10
Fabulous Paints (25).....	11
Complex Expressions (59)	12-13
Custom Paint Match.....	14
Glaze Options and Techniques	15
Aging Techniques.....	16
Sheen Options	17
DOOR STYLE OPTIONS.....	18
Door Style Legend	18
Flat Panel (22).....	19-21
Mitered (8)	21
Classic Raised Panel (6)	22
Veneer Slab (2)	22
Beadboard Panel (2)	22
Beaded Raised Panel (8)	23
Applied Molding (2)	23
1-Piece Craftwood (10)	24
Door Style Availability Chart.....	25
POSTS/LEGS & BUNN FEET	26
CORBELS	27
STORAGE SOLUTIONS.....	28-29
ACCESSORIES/EMBELLISHMENTS	30-31
CABINET CONSTRUCTION.....	32
DEALER PROJECTS	33-35

COVER IMAGE

Finish Snowfall, perimeter.
Obsidian, island.

Wood Species MDF Paint, perimeter.
Alder, island.

Door Style Oslo Medium.



Finish Ranier.
Wood Species Alder.
Door Style Manhattan.



MODERN CLASSICS

A palette that addresses the growing trends of grey-based colors, dark rich browns, mid-tone browns and the movement to lighter wood finishes giving the clarity and substance of fine furniture, [page 4-10](#)



FABULOUS PAINTS

The paint color palette is nature inspired with colors that are clear, livable, elegant and durable, making them the hallmark of our beautiful finishes, [page 11](#)



COMPLEX EXPRESSIONS

Designed for an entire kitchen or an accent piece as a focal point. These finishes allow a dimension of artistic styling that bring a sense of individuality and personalization, [page 12-13](#)

ADDITIONAL FINISH PRODUCTS AND ENHANCEMENTS



Custom Paint Match

Match a solid finish from well-known paint manufacturers, such as Sherwin-Williams, Ralph Lauren, Benjamin Moore, Behr and more, [page 14](#)



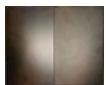
Glaze Options and Techniques

Highlight finishes with one of our four (4) glazes and our two (2) techniques of application, either a hand-wiped or a hand-brushed option, [page 15](#)



Aging Techniques

Handmade artistic processes to accentuate finishes even more. Add character to any finish with one of our ten (10) available distressing options, [page 16](#)



Sheen Options

The best known finishes in the industry are offered in two (2) sheen options for a subtle variation in reflection, creating not only protection but the velvety feel of an elegant and durable finish, [page 17](#)

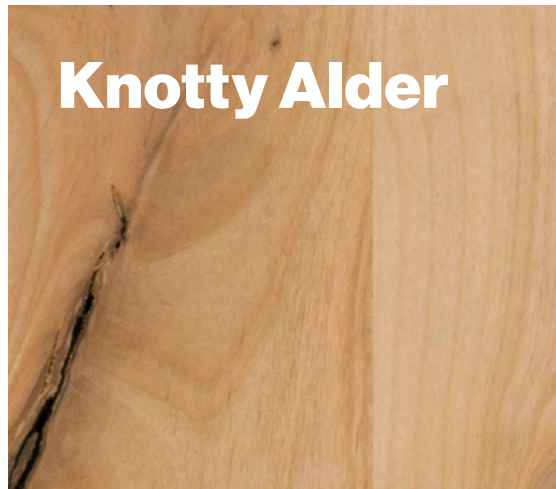


MODERN CLASSICS



Alder

Reddish-brown to pale yellow wood with soft straight grain, even texture and a subtle figure. Alder mellows with age and exposure to light.

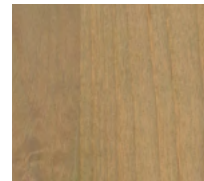


Knotty Alder

Random distribution of knots which will be partially filled with resin as a means of securing the knot.



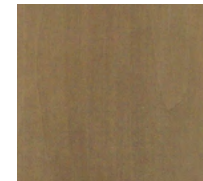
Outer Banks



Suede



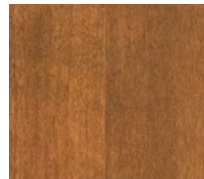
Pebble Beach



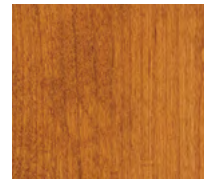
Sepia Mist



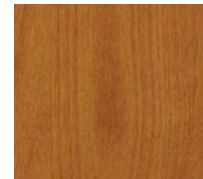
Natural



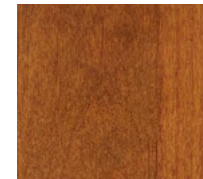
Breckenridge



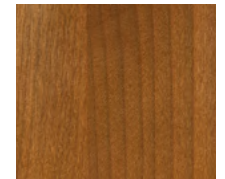
1/2 Russet



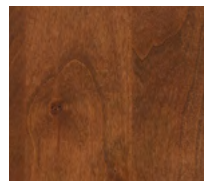
Sorrel



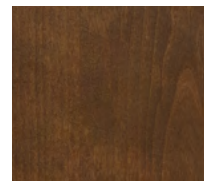
Russet



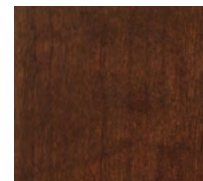
Allspice



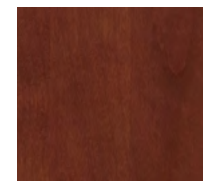
Copper Mountain



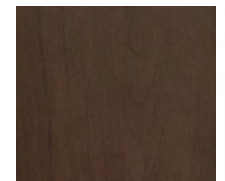
Creekside



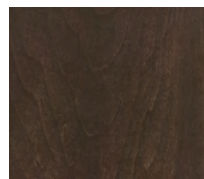
Berwick



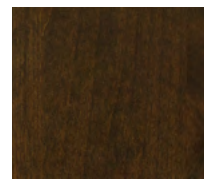
Chatfield



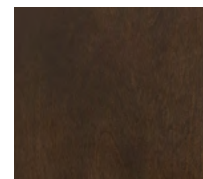
Sorghum



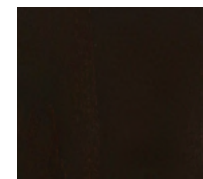
Ranier



Teton



Churchill



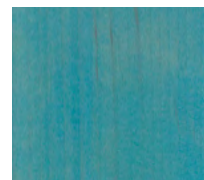
Arabica



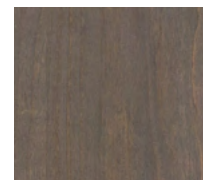
Obsidian



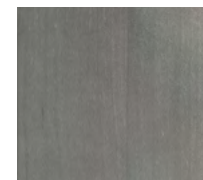
Starry Night



Whirlpool



Glacier



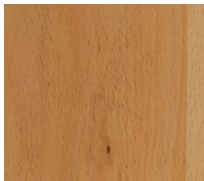
Gainsborough



Outer Banks



Pebble Beach



Natural



Sorrel



Russet



1/2 Russet



Breckenridge



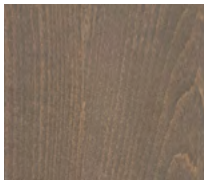
Allspice



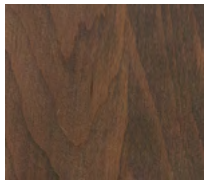
Copper Mountain



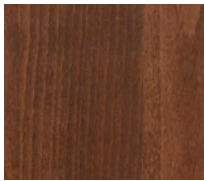
Creekside



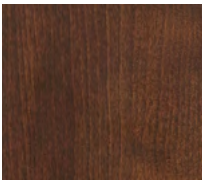
Glacier



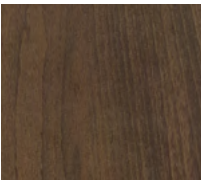
Westminster



Chatfield



Berwick



Ranier



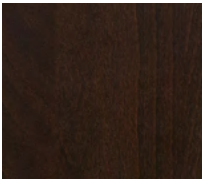
Chateau



Churchill



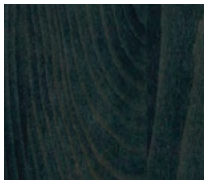
Teton



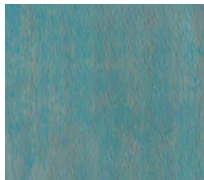
Arabica



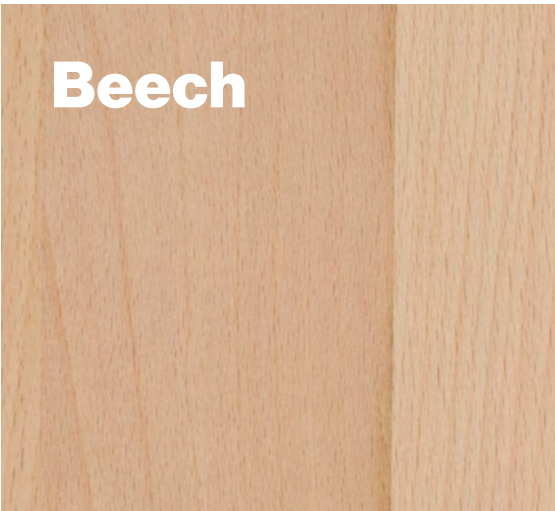
Obsidian



Starry Night



Whirlpool



Strong wood with whitish to pale brown straight grain and small grey flecks. Although we hand select our lumber, you can expect some light mineral color and streaking which will be more noticeable on light finishes.



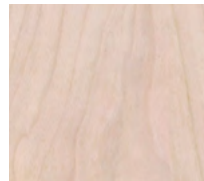
Repaired knots of various sizes and heavy mineral coloring and streaking, which is more visible on lighter finishes.



MODERN CLASSICS



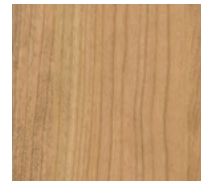
Durable, moderately strong hardwood with reddish-brown hue, straight grain and fine texture. Although we hand select our lumber, you can expect some slight mineral streaks, gum or pitch pockets and a small percentage of white sapwood. These characteristics are more noticeable on lighter finishes. Cherry wood darkens over time and exposure to light.



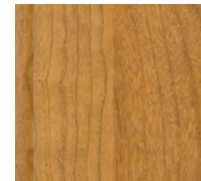
Outer Banks



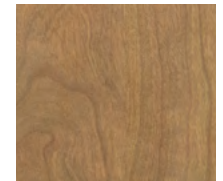
Natural



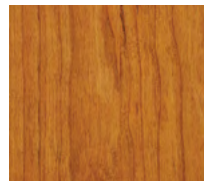
Pebble Beach



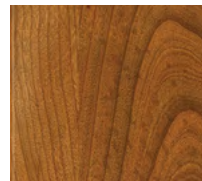
Breckenridge



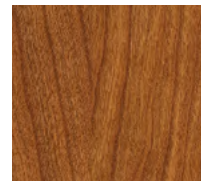
Suede



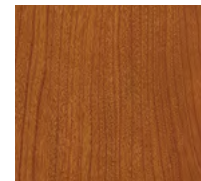
1/2 Russet



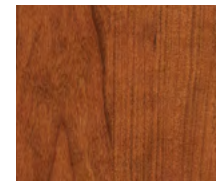
Allspice



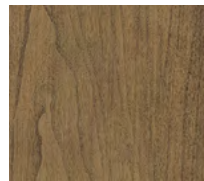
Russet



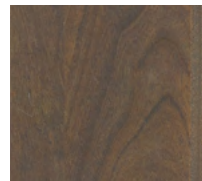
Sorrel



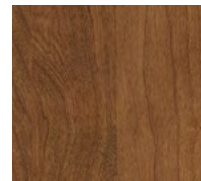
Copper Mountain



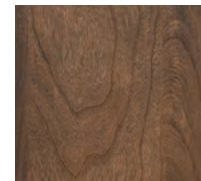
Sepia Mist



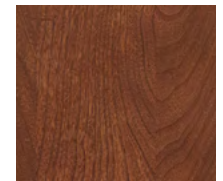
Glacier



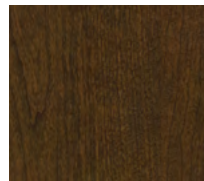
Creekside



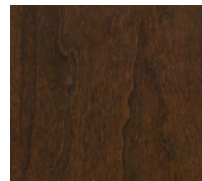
Ranier



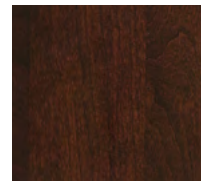
Chatfield



Teton



Churchill



Berwick



Arabica



Starry Night



Whirlpool





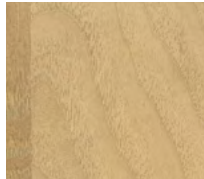
Outer Banks



Pebble Beach



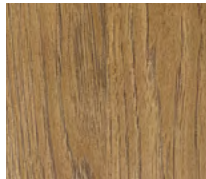
Natural



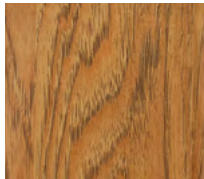
Suede



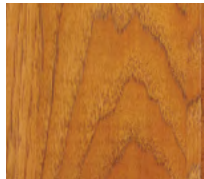
Breckenridge



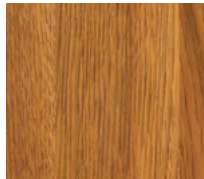
Sepia Mist



Allspice



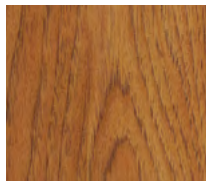
1/2 Russet



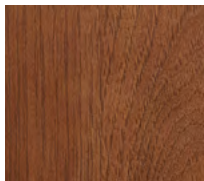
Copper Mountain



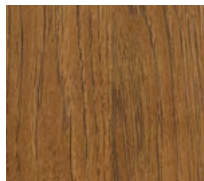
Sorrel



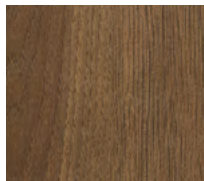
Russet



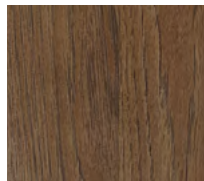
Chatfield



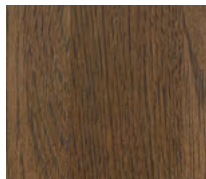
Creekside



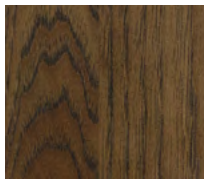
Ranier



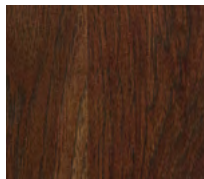
Westminster



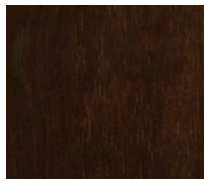
Churchill



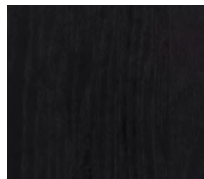
Teton



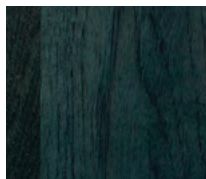
Berwick



Arabica



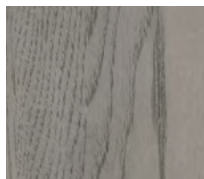
Obsidian



Starry Night



Whirlpool



Gainsborough



A dense, tough, coarse-textured wood with white sapwood and reddish-brown heartwood. The color and graining patterns will have variations from black to brown in the heartwood to yellow in the sapwood. Certain stains will amplify this effect.

MODERN CLASSICS



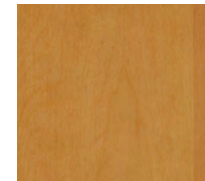
Outer Banks



Natural



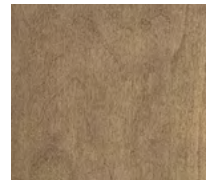
Pebble Beach



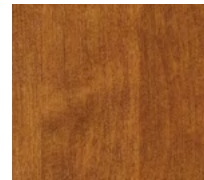
Sorrel



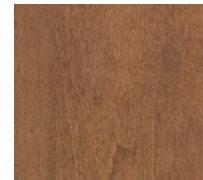
1/2 Russet



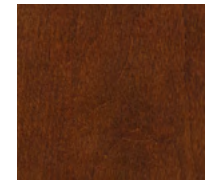
Ranier



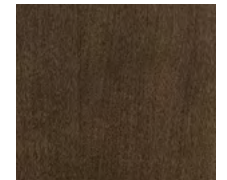
Russet



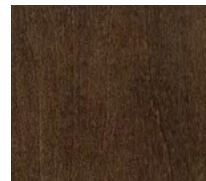
Chatfield



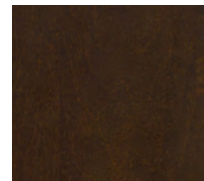
Chateau



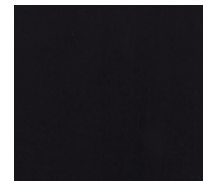
Teton



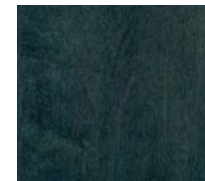
Churchill



Arabica



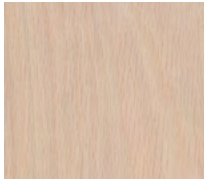
Obsidian



Starry Night

Heavy, straight-grained wood with a fine texture. The sapwood is white and selected for its light color; maple does not generally take dark colors well and may appear blotchy. On light colors the natural mineral streaks may not be concealed. Darker colors often conceal these mineral streaks.

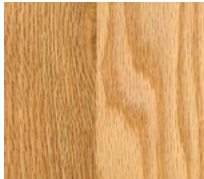




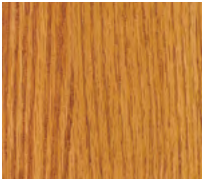
Outer Banks



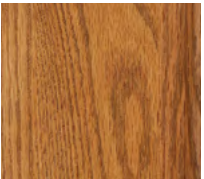
Pebble Beach



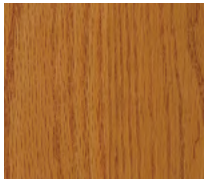
Natural



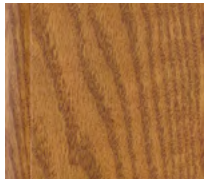
1/2 Russet



Allspice



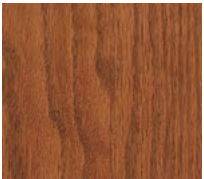
Sorrel



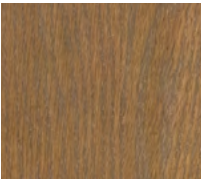
Breckenridge



Russet



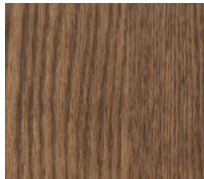
Copper Mountain



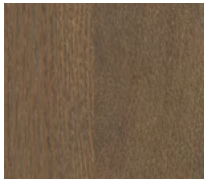
Suede



Sepia Mist



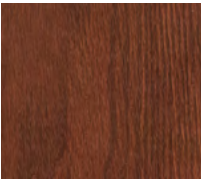
Ranier



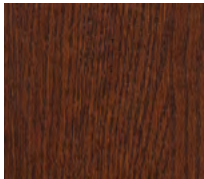
Glacier



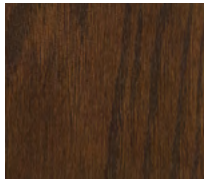
Creekside



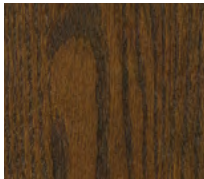
Chatfield



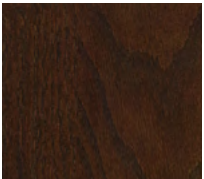
Chateau



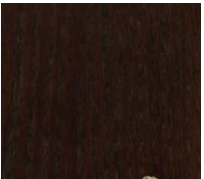
Churchill



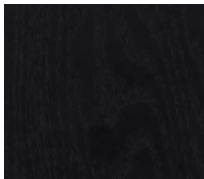
Teton



Berwick



Arabica



Obsidian



Starry Night



Whirlpool



Timeless hardwood with a coarse texture and a pinkish-red hue. The texture of the wood varies according to the rate of growth, but typically has a strong open grain pattern with a mix of straight and cathedral grain patterns. Although we hand select our lumber, you can expect small amounts of mineral streaking, pin knots and burls as well as occasional ray flakes.



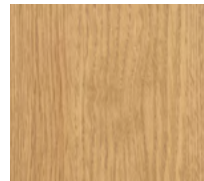


Quarter-Sawn Oak

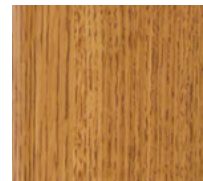
Stable wood with pale yellow-brown to pale brown tones, sometimes with a pinkish tint. As a result of the quarter sawing process, the wood exhibits a beautiful grain texture with a uniform straight grain and a striking ray flake figure. Although we hand select our lumber, you can expect occasional pin knots and light mineral streaks.



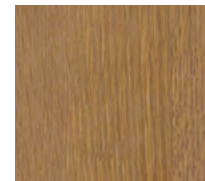
Outer Banks



Pebble Beach



Breckenridge



Suede



Natural



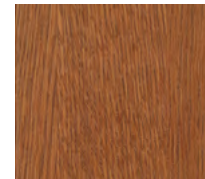
1/2 Russet



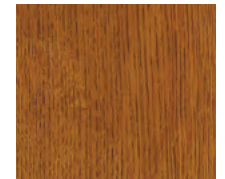
Allspice



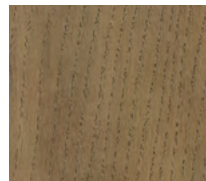
Sorrel



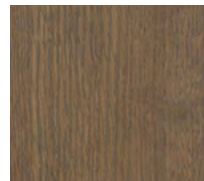
Copper Mountain



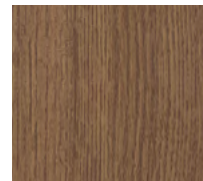
Russet



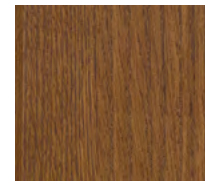
Sepia Mist



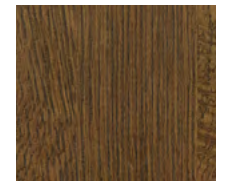
Glacier



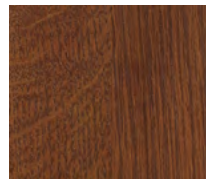
Ranier



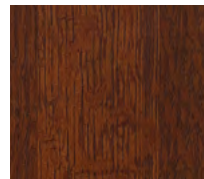
Creekside



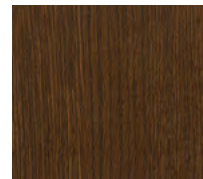
Teton



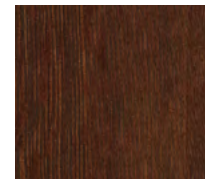
Chatfield



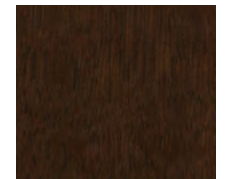
Chateau



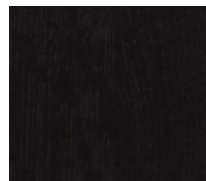
Churchill



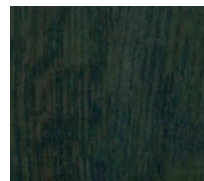
Berwick



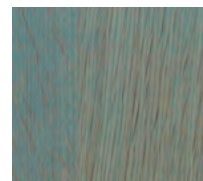
Arabica



Obsidian



Starry Night



Whirlpool



Gainsborough

FABULOUS PAINTS



One of the hallmarks of our unsurpassed finish are our fabulous paints with an affordable luxury you can literally feel. More color options available with our paint match program, [page 14](#)



Finish Seaport.
Wood Species MDF Paint.
Door Style Chesapeake Medium.

COMPLEX EXPRESSIONS

For those who want cabinets or an accent piece with more character or personality, our Complex Expressions offer a luxurious dimensional finish. Our hand applied glazes and aging techniques offer artistic styling ranging from coastal to rustic and everything in between.



Lakeside, Hickory



Lakeside, QSO



White Sail



Milk Bottle



Kitty Hawk



Farmhouse White



Sanibel



Shipwrecked



Biscotti



Fisherman's Wharf



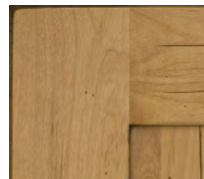
Sand Dune



Cheyenne, Alder



Cheyenne, Beech



Log Cabin



Stonehenge



Appalachian



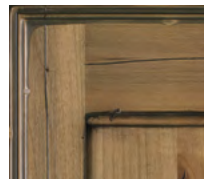
Willow Branch



Barley



Antler



Antelope Flats



Aspen Silver



Feather Grey



Lagoon



Oxford Blue



Moonlight



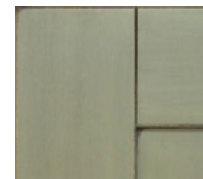
Timbered Island



Fennel



Watercress

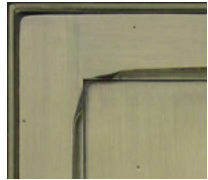


Lily Pad



Herbal Tea

COMPLEX EXPRESSIONS



Bamboo Grove



Zen



Sparrow Grass



Laurel



Artichoke



Palm Branch



Ghost Ranch, Alder



Timber Wolf, Alder



Ghost Ranch, Oak



Timber Wolf, Oak



Wildwood



Wren



Ocean Walk



Heritage Red



Garnet



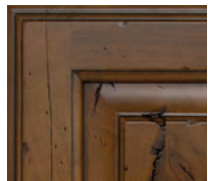
Oxblood



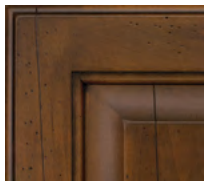
Flint Hills



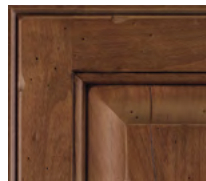
Cumberland, Alder



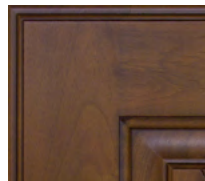
Cumberland, Beech



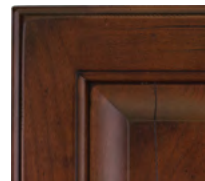
Horseshoe, Alder



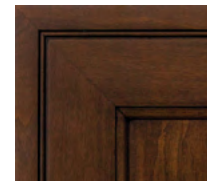
Saddle Horn



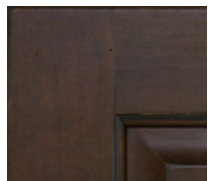
Canyon Lodge



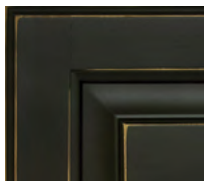
Horseshoe, Cherry



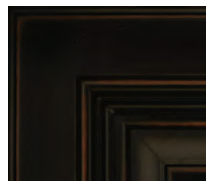
Derby Brown



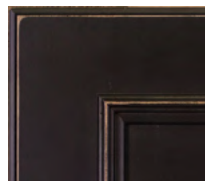
Clydesdale



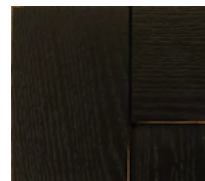
Irish Stout



Friesian Stallion



Maestro, Beech



Maestro, Oak

Finish
Wood Species
Door Style

Ghost Ranch.
Alder.
Concord Wide.

CUSTOM PAINT MATCH



Color plays an important part of designing a dream kitchen. To make the design process easier, we have a Custom Paint Match Program that allows you to offer paint matching from just about any color swatch. The color eye works very much as it would at your local paint supplier. See commonly used swatches >



Finish Custom Paint Match.
Wood Species Paint Grade.
Door Style Kingston Wide.

Current Paint Fan Decks Available

- Behr
- Benjamin Moore
- Dunn-Edwards Paints
- Farrow & Ball
- Glidden
- Kelly-Moore Paints
- Pratt & Lambert
- Ralph Lauren
- Sherwin-Williams
- Valspar

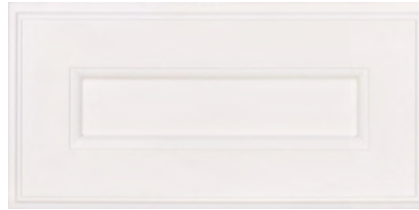
GLAZE TECHNIQUES



STANDARD GLAZE. Highlighting is applied to the entire surface of the cabinet and doors and then wiped off, leaving hang-up in the recessed areas.



BRUSHED GLAZE is a special technique that leaves brush strokes over the entire surface.



No glaze



Burgundy



Van Dyke Brown



Pewter



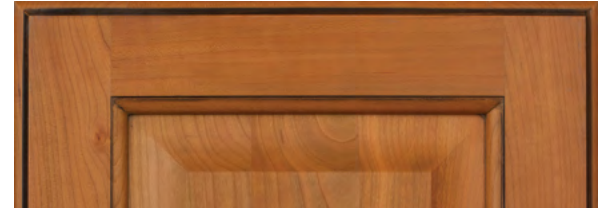
Midnight Frost



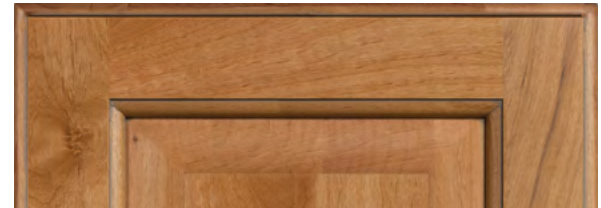
No glaze



Burgundy



Van Dyke Brown



Pewter



Midnight Frost

AGING TECHNIQUES



Cracks
Simulated cracks of varied lengths and sizes



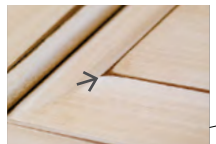
Worm Holes
Random ice-pick marks in small clusters throughout



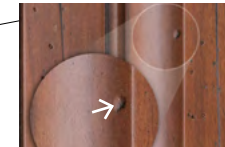
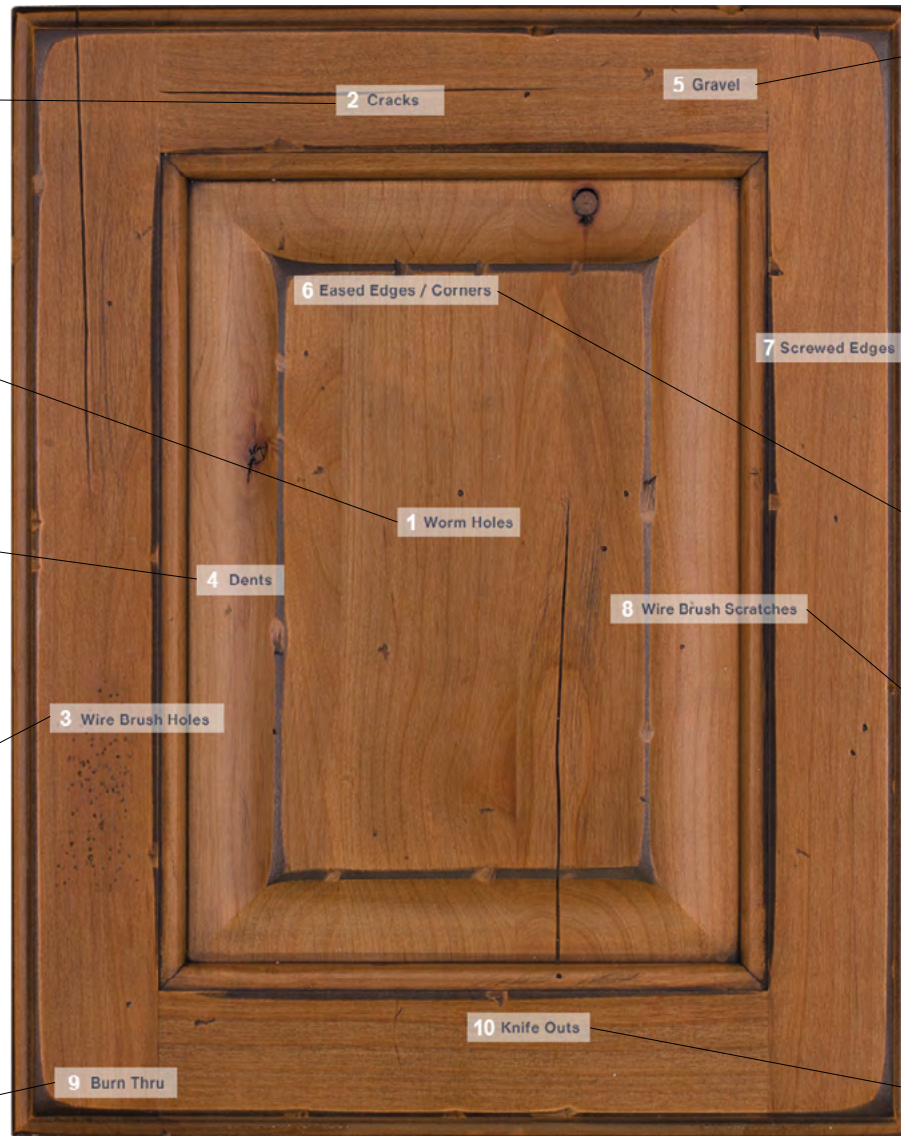
Dents
Random placement of shallow dents



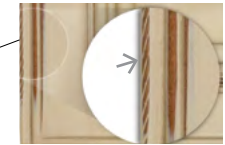
Wire Brush Holes
Very small lightly patterned holes in different areas of a door



Burn Thru
Wear through, after stain is applied, before glaze/sheen



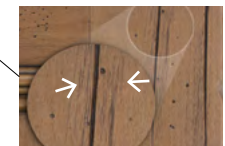
Gravel
Random dents of various sizes, deeper, more widespread



Screwed Edges
Simulated saw marks on edges of the door



Eased Edges/Corners
All corners are sanded before stain is applied to create a worn edge



Wire Brush Scratches
Tiny scratches in a tight pattern



Knife Outs
Tear outs along the edges of the door

Ten (10) types of aging (distressing) techniques are available in a variety of combinations. Aging is a handmade artistic process and, like any fine art, no two pieces will be identical. Not all types of aging are available on all wood species.

SHEEN OPTIONS



Two sheen options are available, Satin and Flat. Our Satin sheen has a slight reflective finish, and our Flat sheen is a less reflective finish. Both options provide a velvety feel that's elegant while being durable and easy to clean, for one of the best quality finishes in the industry.

DOOR STYLE OPTIONS



Our Evoke line offers a wide variety of doors in different styles. Doors will come with a slab drawer front as standard. A 5-piece matching front is available for most doors, and some doors will also have additional drawer front options available. See below for an example of different drawer front options.



Plymouth Narrow
with a Slab front

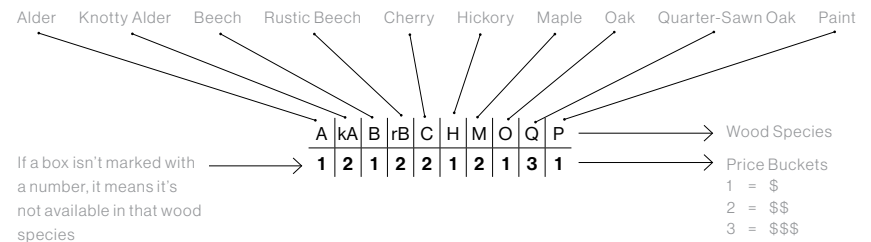
Plymouth Narrow
with a 5-Piece Matching

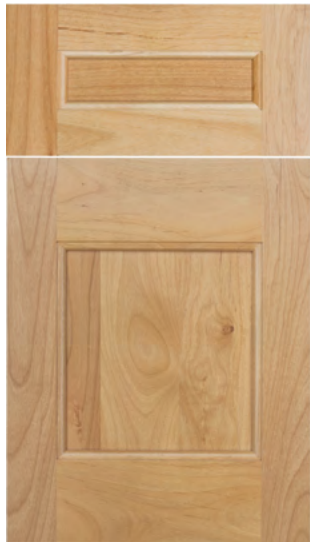
Plymouth Narrow
with a 5-Piece Matching
Flat Panel

Plymouth Narrow
with a 5-Piece Matching
Flat Panel Narrow Rails

DOOR STYLE LEGEND

Every door style displayed on this brochure will have its own small legend explaining the wood species availability and pricing.





Aurora

A	kA	B	rB	C	H	M	O	Q	P
1	2	1	2	2	1	2	1	3	1



Concord Narrow

A	kA	B	rB	C	H	M	O	Q	P
1	2	1	2	2	1	2	1	3	1



Concord Medium

A	kA	B	rB	C	H	M	O	Q	P
2	2	2	2	2	2	2	2	3	2



Concord Wide

A	kA	B	rB	C	H	M	O	Q	P
3	3	3	3	3	3	3	3	3	3



Hampton Narrow

A	kA	B	rB	C	H	M	O	Q	P
1	2	1	2	2	1	2	1	3	1



Hampton Medium

A	kA	B	rB	C	H	M	O	Q	P
2	2	2	2	2	2	2	2	3	2



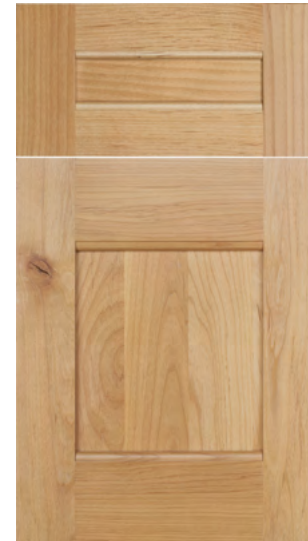
Hampton Wide

A	kA	B	rB	C	H	M	O	Q	P
3	3	3	3	3	3	3	3	3	3



Kingston Wide

A	kA	B	rB	C	H	M	O	Q	P
2	2	2	2	2	2	2	2	3	2



Lancaster

A	kA	B	rB	C	H	M	O	Q	P
2	2	2	2	2	2	2	2	3	2



Montecito Narrow

A	kA	B	rB	C	H	M	O	Q	P
2	2	2	2	2	2	2	2	3	2

See page 18 for an explanation on how to read the legend under each door.

FLAT PANEL



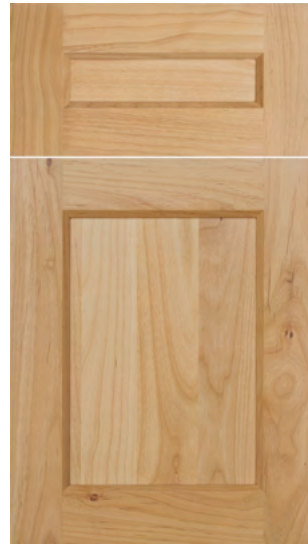
Montecito Medium

A	k	A	B	r	B	C	H	M	O	Q	P
2	2	2	2	2	2	2	2	2	3	3	2



Montecito Wide

A	k	A	B	r	B	C	H	M	O	Q	P
3	3	3	3	3	3	3	3	3	3	3	3



Oslo Narrow

A	k	A	B	r	B	C	H	M	O	Q	P
1	2	1	2	2	1	2	1	3	1	3	1



Oslo Medium

A	k	A	B	r	B	C	H	M	O	Q	P
2	2	2	2	2	2	2	2	3	2	3	2



Oslo Wide

A	k	A	B	r	B	C	H	M	O	Q	P
2	2	2	2	2	2	2	2	3	2	3	2



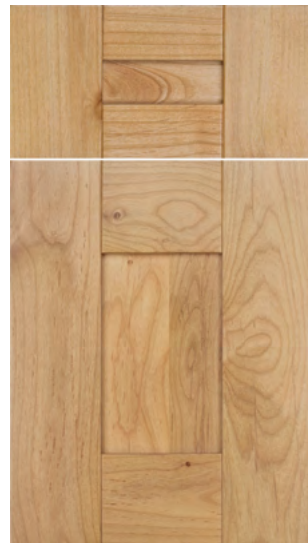
Pasadena

A	k	A	B	r	B	C	H	M	O	Q	P
1	2	1	2	2	1	2	1	3	1	3	1



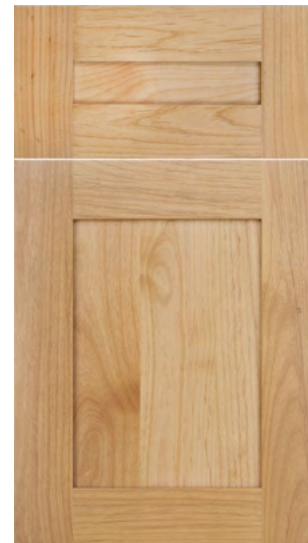
Roman Flat

A	k	A	B	r	B	C	H	M	O	Q	P
2	2	2	2	2	2	2	2	3	2	3	2



Sedona

A	k	A	B	r	B	C	H	M	O	Q	P
2	2	2	2	2	2	2	2	3	2	3	2



Shaker Narrow

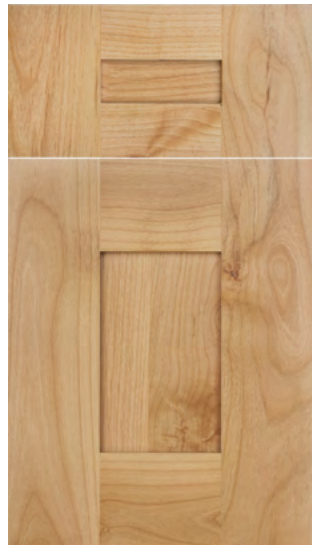
A	k	A	B	r	B	C	H	M	O	Q	P
1	2	1	2	2	1	2	1	3	1	3	1



Shaker Medium

A	k	A	B	r	B	C	H	M	O	Q	P
2	2	2	2	2	2	2	2	3	2	3	2

FLAT PANEL



Shaker Wide

A	kA	B	rB	C	H	M	O	Q	P
2	2	2	2	2	2	2	2	3	2



Vienna Medium

A	kA	B	rB	C	H	M	O	Q	P
1	2	1	2	2	1	2	1	3	1

MITERED

Hickory wood species not available with mitered doors.



Asheville

A	kA	B	rB	C	H	M	O	Q	P
3	3	3	3	3	3	3	3	3	3



Bedford

No Paints

A	kA	B	rB	C	H	M	O	Q	P
3	3	3	3	3	3	3	3	3	3



Ellerston

A	kA	B	rB	C	H	M	O	Q	P
3	3	3	3	3	3	3	3	3	3



Franklin

A	kA	B	rB	C	H	M	O	Q	P
2	2	2	2	2	2	2	2	3	2



Sutton

A	kA	B	rB	C	H	M	O	Q	P
2	2	2	2	2	2	2	2	3	2



Rochester

A	kA	B	rB	C	H	M	O	Q	P
3	3	3	3	3	3	3	3	3	3



Rosecliff

A	kA	B	rB	C	H	M	O	Q	P
2	2	2	2	2	2	2	2	3	2



Vancouver

No Paints

A	kA	B	rB	C	H	M	O	Q	P
2	2	2	2	2	2	2	2	3	2

See page 18 for an explanation on how to read the legend under each door.

CLASSIC RAISED PANEL



Chesapeake Narrow

A	k	A	B	r	B	C	H	M	O	Q	P
1	2	1	2	2	1	2	1	3	1		



Chesapeake Medium

A	k	A	B	r	B	C	H	M	O	Q	P
2	2	2	2	2	2	2	2	3	2		



Chesapeake Wide

A	k	A	B	r	B	C	H	M	O	Q	P
3	3	3	3	3	3	3	3	3	3		



Plymouth Narrow

A	k	A	B	r	B	C	H	M	O	Q	P
1	2	1	2	2	1	2	1	3	1		



Plymouth Wide

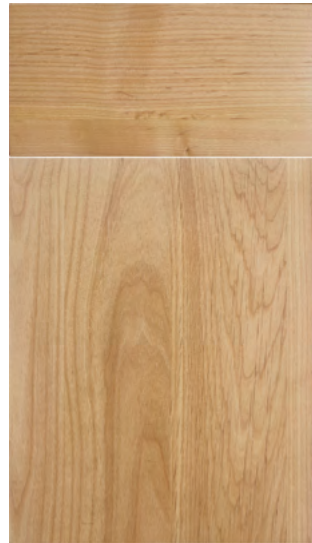
A	k	A	B	r	B	C	H	M	O	Q	P
2	2	2	2	2	2	2	2	3	2		

VENEER SLAB



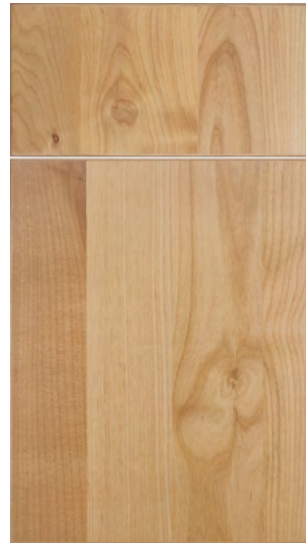
Roman Classic

A	k	A	B	r	B	C	H	M	O	Q	P
2	2	2	2	2	2	2	2	3	2		



Manhattan

A	k	A	B	r	B	C	H	M	O	Q	P
1		1		2	1	2	1	3	1		



Tribeca

A	k	A	B	r	B	C	H	M	O	Q	P
2		2		2	2	2	2	3			



Farmington

A	k	A	B	r	B	C	H	M	O	Q	P
3	3	3	3	3	3	3	3	3	3		



Shaker Grooved

A	k	A	B	r	B	C	H	M	O	Q	P
3	3	3	3	3	3	3	3	3	3		

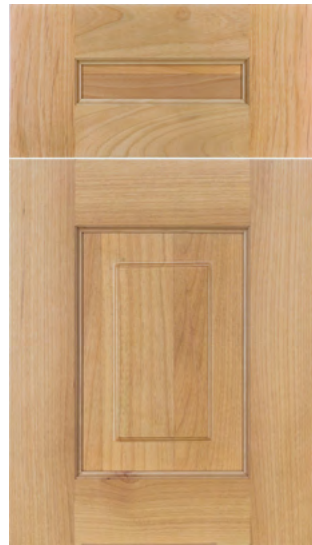
BEADBOARD PANEL

BEADED RAISED PANEL



Hatteras Narrow

A	kA	B	rB	C	H	M	O	Q	P
1	2	1	2	2	1	2	1	3	1



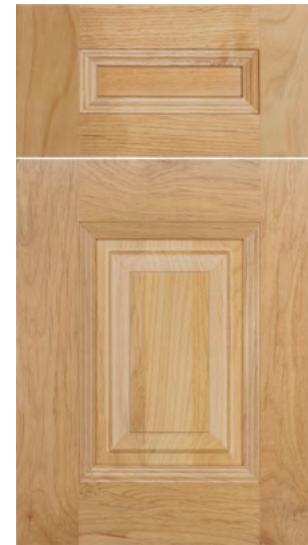
Hatteras Medium

A	kA	B	rB	C	H	M	O	Q	P
2	2	2	2	2	2	2	2	3	2



Hatteras Wide

A	kA	B	rB	C	H	M	O	Q	P
3	3	3	3	3	3	3	3	3	3



Manchester Medium

A	kA	B	rB	C	H	M	O	Q	P
2	2	2	2	2	2	2	2	3	2



Potomac Narrow

A	kA	B	rB	C	H	M	O	Q	P
	1	2	2	1	2	1	3	1	

APPLIED MOLDING



Potomac Wide

A	kA	B	rB	C	H	M	O	Q	P
	3	3	3	3	3	3	3	3	3



Roman Beaded

A	kA	B	rB	C	H	M	O	Q	P
3	3	3	3	3	3	3	3	3	3



Savannah

A	kA	B	rB	C	H	M	O	Q	P
3	3	3	3	3	3	3	3	3	3



Highbanks

A	kA	B	rB	C	H	M	O	Q	P
3	3	3	3	3	3	3	3	3	3

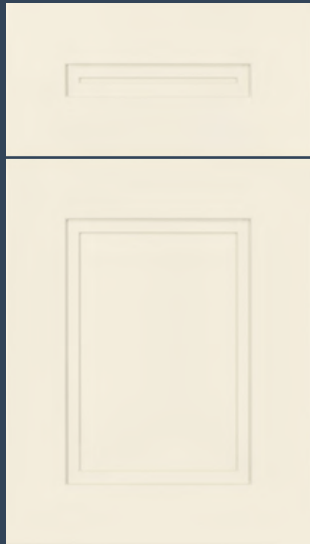


Shaker Narrow with AM15

A	kA	B	rB	C	H	M	O	Q	P
3	3	3	3	3	3	3	3	3	3

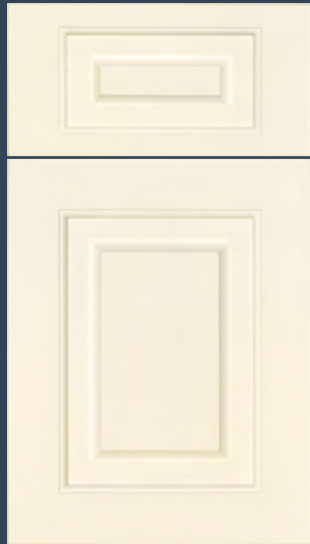
See page 18 for an explanation on how to read the legend under each door.

1-PIECE CRAFTWOOD *Paints Only*



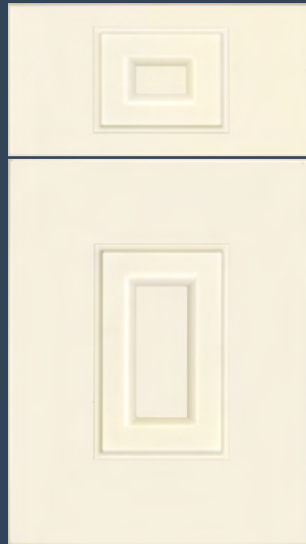
Bridgeport 1PC

A	kA	B	rB	C	H	M	O	Q	P
									1



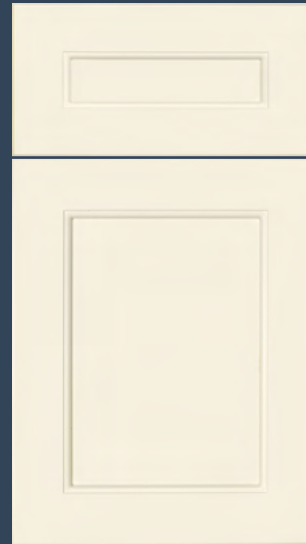
Chesapeake Narrow 1PC

A	kA	B	rB	C	H	M	O	Q	P
									1



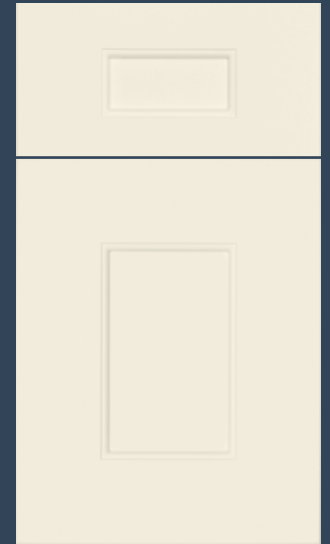
Chesapeake Wide 1PC

A	kA	B	rB	C	H	M	O	Q	P
									1



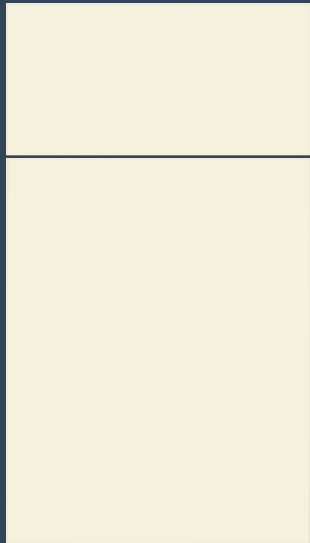
Concord Narrow 1PC

A	kA	B	rB	C	H	M	O	Q	P
									1



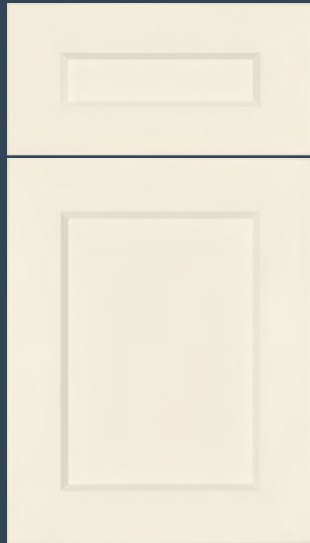
Concord Wide 1PC

A	kA	B	rB	C	H	M	O	Q	P
									1



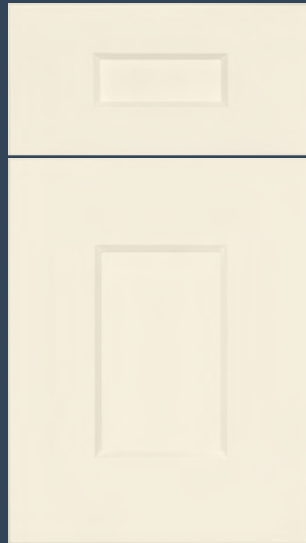
Manhattan 1PC

A	kA	B	rB	C	H	M	O	Q	P
									1



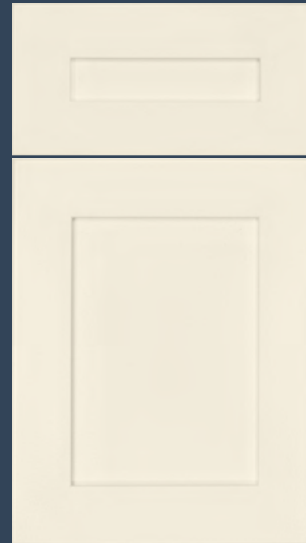
Oslo Narrow 1PC

A	kA	B	rB	C	H	M	O	Q	P
									1



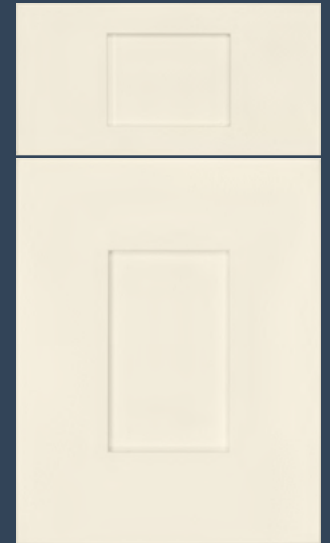
Oslo Wide 1PC

A	kA	B	rB	C	H	M	O	Q	P
									1



Shaker Narrow 1PC

A	kA	B	rB	C	H	M	O	Q	P
									1



Shaker Wide 1PC

A	kA	B	rB	C	H	M	O	Q	P
									1

DOOR STYLE AVAILABILITY CHART

STYLE CATEGORY	#	DOOR STYLE NAME	WOOD SPECIES										DRAWER FRONT OPTIONS					
			ALDER	KNOTTY ALDER	BEECH	RUSTIC BEECH	CHERRY	HICKORY	MAPLE	OAK	QUARTER-SAWN OAK	PAINT	SLAB	5-PIECE MATCHING NARROW RAILS	5-PIECE MATCHING FLAT PANEL	SLAB PREMIUM		
FLAT PANEL	1	Aurora	1	2	1	2	2	1	2	1	3	1	1	◆	◆			
	2	Concord Narrow	1	2	1	2	2	1	2	1	3	1	1	◆	◆			
	3	Concord Medium	2	2	2	2	2	2	2	2	3	2	2	◆	◆			
	4	Concord Wide	3	3	3	3	3	3	3	3	3	3	3	◆	◆			
	5	Hampton Narrow	1	2	1	2	2	1	2	1	3	1	1	◆	◆			
	6	Hampton Medium	2	2	2	2	2	2	2	2	3	2	2	◆	◆			
	7	Hampton Wide	3	3	3	3	3	3	3	3	3	3	3	◆	◆			
	8	Kingston Wide	2	2	2	2	2	2	2	2	3	2	2	◆	◆			
	9	Lancaster	2	2	2	2	2	2	2	2	3	2	2	◆	◆			
	10	Montecito Narrow	2	2	2	2	2	2	2	2	3	2	2	◆	◆			
	11	Montecito Medium	2	2	2	2	2	2	2	2	3	2	2	◆	◆			
	12	Montecito Wide	3	3	3	3	3	3	3	3	3	3	3	◆	◆			
	13	Oslo Narrow	1	2	1	2	2	1	2	1	3	1	1	◆	◆			
	14	Oslo Medium	2	2	2	2	2	2	2	2	3	2	2	◆	◆			
	15	Oslo Wide	2	2	2	2	2	2	2	2	3	2	2	◆	◆			
	16	Pasadena	1	2	1	2	2	1	2	1	3	1	1	◆	◆	◆		◆
	17	Roman Flat	2	2	2	2	2	2	2	2	3	2	2	◆	◆			
	18	Sedona	2	2	2	2	2	2	2	2	3	2	2	◆	◆			◆
	19	Shaker Narrow	1	2	1	2	2	1	2	1	3	1	1	◆	◆	◆		
	20	Shaker Medium	2	2	2	2	2	2	2	2	3	2	2	◆	◆			
	21	Shaker Wide	2	2	2	2	2	2	2	2	3	2	2	◆	◆	◆		
	22	Vienna Medium	1	2	1	2	2	1	2	1	3	1	1	◆	◆			
MITERED DOORS	23	Asheville	3	3	3	3	3		3	3	3	3	◆	◆				
	24	Bedford (no paints)	3	3	3	3	3		3	3	3		◆	◆				
	25	Ellerston	3	3	3	3	3		3	3	3	3	◆	◆				
	26	Franklin	2	2	2	2	2		2	2	3	2	2	◆	◆			
	27	Sutton	2	2	2	2	2		2	2	3	2	2	◆	◆			
	28	Rochester	3	3	3	3	3		3	3	3	3	3	◆	◆			
	29	Rosecliff	2	2	2	2	2		2	2	3	2	2	◆	◆			
	30	Vancouver (no paints)	2	2	2	2	2		2	2	3			◆	◆			

STYLE CATEGORY	#	DOOR STYLE NAME	WOOD SPECIES										DRAWER FRONT OPTIONS					
			ALDER	KNOTTY ALDER	BEECH	RUSTIC BEECH	CHERRY	HICKORY	MAPLE	OAK	QUARTER-SAWN OAK	PAINT	SLAB	5-PIECE MATCHING NARROW RAILS	5-PIECE MATCHING FLAT PANEL	SLAB PREMIUM		
CLASSIC RAISED	31	Chesapeake Narrow	1	2	1	2	2	1	2	1	3	1	1	◆		◆	◆	
	32	Chesapeake Medium	2	2	2	2	2	2	2	2	3	2	2	◆		◆	◆	
	33	Chesapeake Wide	3	3	3	3	3	3	3	3	3	3	3	◆		◆	◆	
	34	Plymouth Narrow	1	2	1	2	2	1	2	1	3	1	1	◆	◆	◆	◆	
	35	Plymouth Wide	2	2	2	2	2	2	2	2	3	2	2	◆	◆	◆	◆	
	36	Roman Classic	2	2	2	2	2	2	2	2	3	2	2	◆	◆			
VENEER SLAB	37	Manhattan	1		1		2	1	2	1	3		◆				◆	
	38	Tribeca	2		2		2	2	2	2	3		◆				◆	
BEAD-BOARD	39	Farmington	3	3	3	3	3	3	3	3	3	3	◆	◆	◆	◆		
	40	Shaker Grooved	3	3	3	3	3	3	3	3	3	3	3	◆		◆	◆	◆
BEADED RAISED	41	Hatteras Narrow	1	2	1	2	2	1	2	1	3	1	1	◆	◆			
	42	Hatteras Medium	2	2	2	2	2	2	2	2	3	2	2	◆	◆			
	43	Hatteras Wide	3	3	3	3	3	3	3	3	3	3	3	◆	◆			
	44	Manchester Medium	2	2	2	2	2	2	2	2	3	2	2	◆	◆			
	45	Potomac Narrow			1	2	2	1	2	1	3	1	1	◆		◆	◆	
	46	Potomac Wide			3	3	3	3	3	3	3	3	3	◆		◆	◆	
	47	Roman Beaded	3	3	3	3	3	3	3	3	3	3	3	◆		◆		
	48	Savannah	3	3	3	3	3	3	3	3	3	3	3	◆				◆
APPLIED MOLD.	49	Highbanks	3	3	3	3	3	3	3	3	3	3	3	◆	◆			
	50	Shaker Narrow w/AM15	3	3	3	3	3	3	3	3	3	3	3	◆	◆			
1-PIECE DOORS	51	Bridgeport 1-PC											1	◆	◆			
	52	Chesapeake Narrow 1-PC											1	◆		◆		
	53	Chesapeake Wide 1-PC											1	◆		◆		
	54	Concord Narrow 1-PC											1	◆	◆			
	55	Concord Wide 1-PC											1	◆	◆			
	56	Manhattan 1-PC											1	◆				
	57	Oslo Narrow 1-PC											1	◆	◆			
	58	Oslo Wide 1-PC											1	◆	◆			
	59	Shaker Narrow 1-PC											1	◆	◆	◆		
	60	Shaker Wide 1-PC											1	◆	◆	◆		

If a box isn't marked with a number, it means it's not available in that wood species. Price buckets 1 = \$, 2 = \$\$ and 3 = \$\$\$ ◆ Means drawer front is available for this door style.

POSTS AND LEGS



POST A



POST B



POST C



POST D



POST E



POST F



POST G



POST H



POST I



POST J



POST K



LEG N



LEG P



LEG Q



LEG R



LEG S



LEG T

BUNN FEET

Our Bunn feet allow you to make any simple cabinet into a beautiful furniture grade cabinet, giving it the appearance of a custom-built piece of furniture at a fraction of the cost.



BUNN 1



BUNN 2



BUNN 3



BUNN 4



BUNN 5



BUNN 6



BUNN 7

CORBELS



Acanthus
Extra Large



Bordeaux
Extra Large



Mission



Craftsman
Narrow



Craftsman
Medium



Design 1



Design 2



Shaker



Arts and Crafts
Small



Bordeaux
Medium



Art Deco
Small



Corinthian



Arts and Crafts
Large



Acanthus
Large



Bordeaux
Large



Art Deco
Large



Traditional
Extra Mini

STORAGE SOLUTIONS

Having a beautiful kitchen is the first step, but it also has to function according to your family's lifestyle. We offer multiple storage solutions for your kitchen that will make your life just a little bit easier.



Knife tray



Knife block utensil bin unit



Double tier cutlery tray



Utensil bin unit



Spice pullouts



OXO storage unit



Solid wood tray dividers

STORAGE SOLUTIONS



Mixer shelf



LeMans shelves



Lazy Susan



Base rollout trays



Trash bin pullout



Rollout trays in tall cabinet



Drawer peg system

ACCESSORIES / EMBELLISHMENTS

Accessories are chosen to complement the rest of your space – the finishing touches that tie it all together. With a wide range of decorative and functional features, Evoke allows you to design exactly the type of room you want.



Floating shelves



Platforms



Glass doors

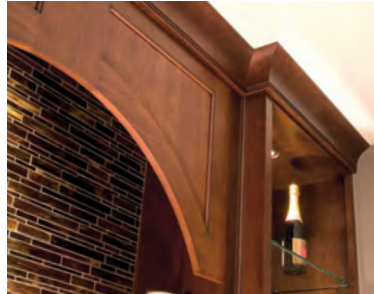


Wood panels

ACCESSORIES / EMBELLISHMENTS



Aventos lift doors



Valances



Corbels



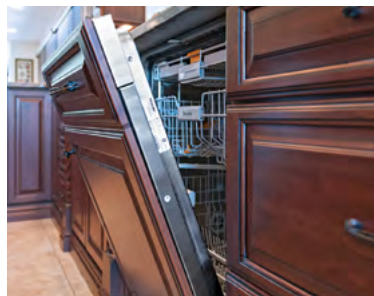
Hood options



Floating vanities



Decorative ends



Applied appliance panels



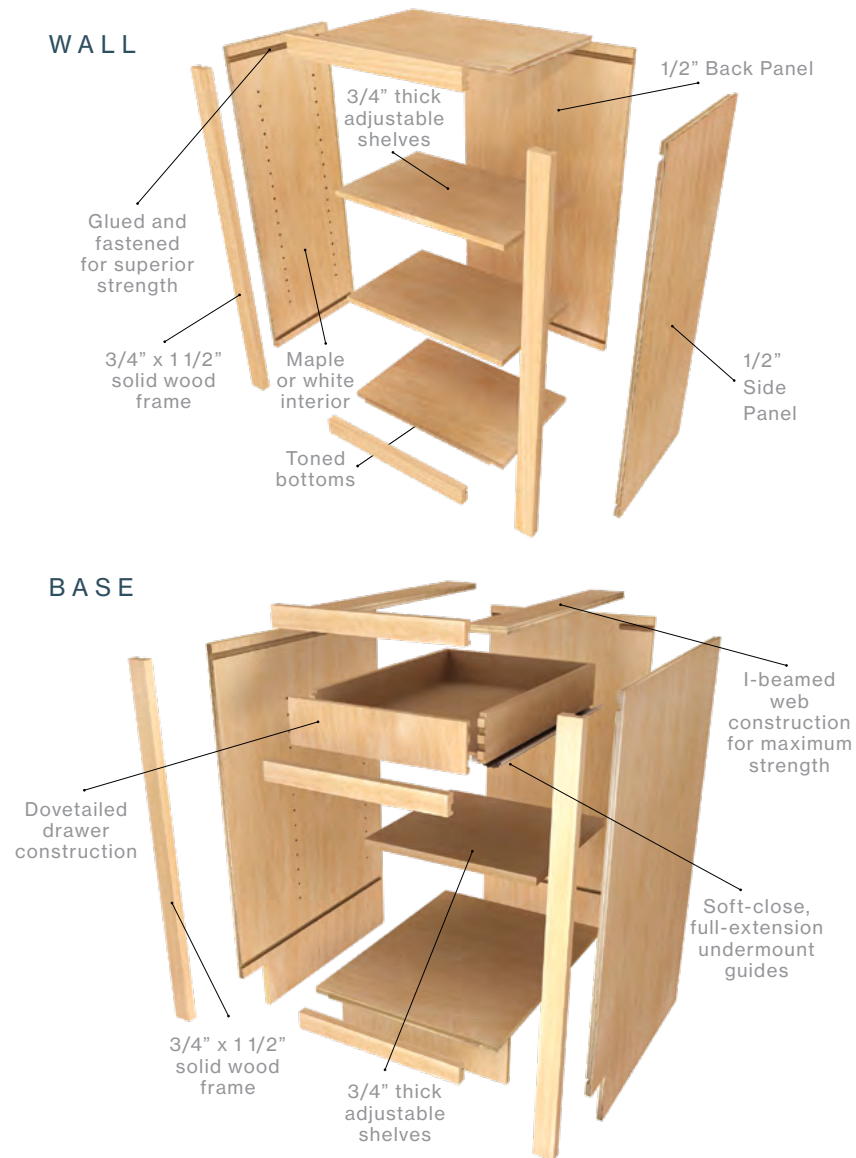
Posts and legs



Heavy-duty wide drawers

CABINET CONSTRUCTION

Our cabinets are built to withstand the most demanding kitchens, not only for strength but also for beauty, giving your kitchen that extra sense of quality.



Our standard* drawer box and rollout options are 5/8" thick dovetailed solid hardwood with the ability to upgrade to our beautiful beech construction for those who enjoy quality even behind the scenes.



Finish Arabica.

Wood Species Alder.

Door Style Oslo Wide.

Features Floating shelves, spice base cabinet, glass doors, island post I, base furniture moldings, Aventos lift-up on wall cabinet.



Finish Timbered Island, island. Snowfall, perimeter.
Wood Species Alder, island. Paint Grade, perimeter.
Door Style Concord Wide, perimeter & island. Concord Wide, bookcase.
Features Glass door modification, crown moldings, under cabinet moldings, furniture base moldings.



Finish Pure White, perimeter.
Sea Glass with MFG brushed glaze, island.

Wood Species Paint Grade.

Door Style Oslo Wide.

Features Glass door modification, crown moldings, under cabinet moldings, furniture base moldings.



Finish Dove, island. Breckenridge, perimeter.

Wood Species Paint Grade, island. Alder, perimeter.

Door Style Oslo Wide.

Features Cubby cabinet, platform island, custom post leg, glass door modification, crown moldings, under cabinet moldings.



EVOKE

CABINETS UNCOMPLICATED

EvokedCabinetry.com



Finish Paint Match Benjamin Moore
Swiss Coffee, perimeter.
Summer Squall, island.

Wood Species Craftwood.

Door Style Olso Narrow 1-PC

© 2022 R.D.HENRY & CO. ALL RIGHTS RESERVED.



KITCHEN CABINET MANUFACTURERS ASSOCIATION.
ENVIRONMENTAL STEWARDSHIP PROGRAM (ESP).
ALL PRODUCTS IMPACT THE ENVIRONMENT
FOR ESP PROGRAM CRITERIA, VISIT KCMA.ORG

PROUDLY MANUFACTURED IN THE U.S.A.

